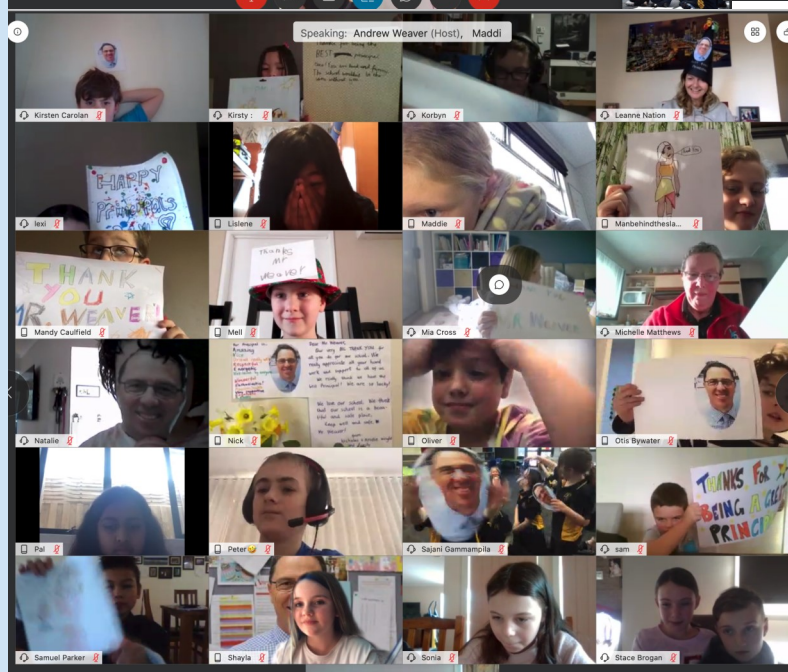
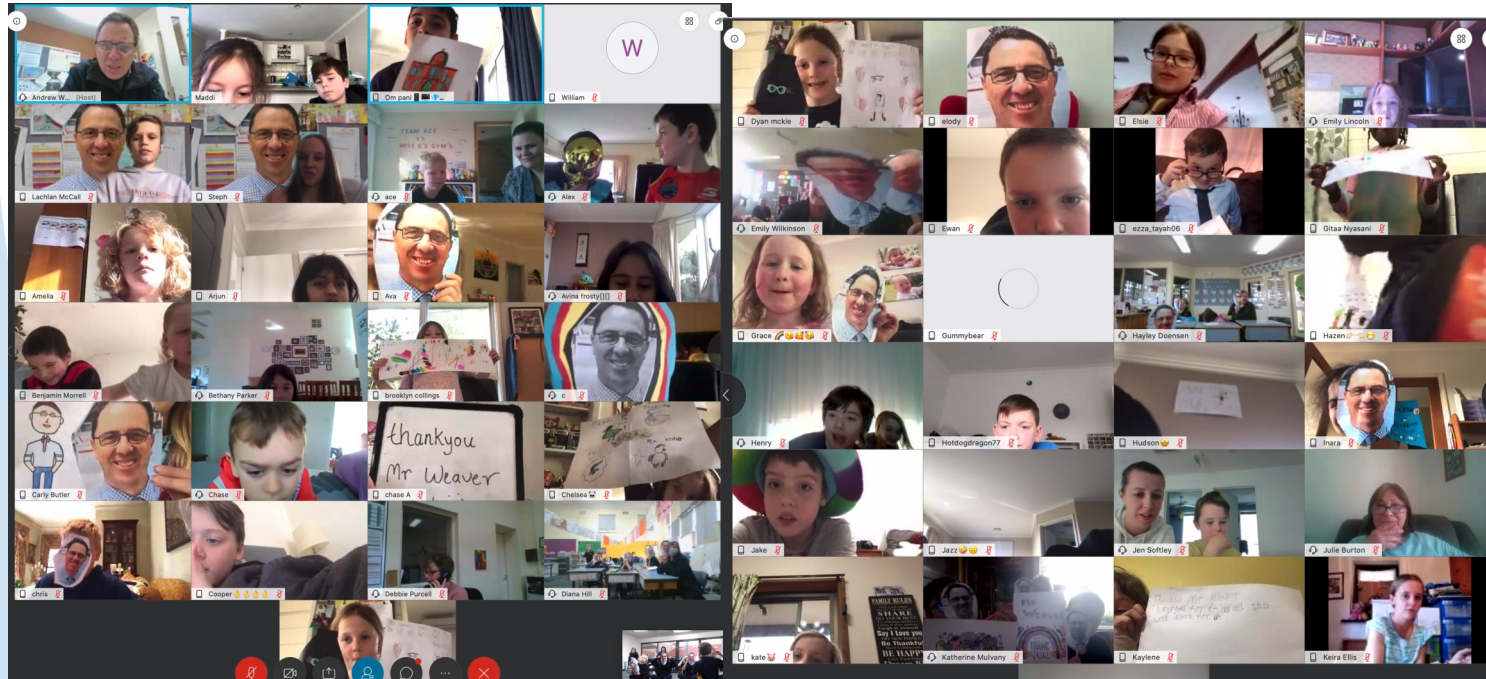


# Celebrating Mr Weaver



A BIG thank you to all of the students and families for helping celebrate Mr Weaver for Principal's Day. Everyone did a fantastic job and Mr Weaver really appreciated and enjoyed.



Don't forget to log the books you have read on the Premier's Reading Challenge page. If you have lost your log in details please check with your class teacher. All children are encouraged to complete this challenge which ends in September. P-2 must read 30 books and 3-6 must read 15 books to reach the challenge.

## Virtual Assembly 3.05 Friday

### Curriculum Days for 2020

- Monday 2<sup>nd</sup> November

*Proud of our Past.  
Educating for the Future*

### TERM DATES 2020

- Term 1: 30th January to 27th March
- Term 2: 14th April to 26th June
- Term 3: 13th July to 18th September
- Term 4: 5th October to 18th December

### Contact Us

Lilydale Primary School  
School Number 0876  
Castella St Lilydale  
Tel: 97351642  
Email: lilydale.ps@edumail.vic.gov.au

# Lilydale Primary School's *The Lilydale Legend*

*Proud of  
our Past  
Educating  
for the  
Future*

Thursday 13th August

Issue 135

### Next week's Monday and Tuesday arrangements for 3/4EH

On Monday 17<sup>th</sup> and Tuesday 18<sup>th</sup> August both Mrs Hill and Mr Ellis will be taking part in the Primary Science Specialist course. This will mean that students in 3/4EH will be given the codes and passwords to join Mr Irvin's or Miss Doensen's classes for literacy and numeracy on these dates. Please be aware of this change. The remote learning classes for 3/4 EH will resume with their original codes on Wednesday 19<sup>th</sup> August.

### Onsite Provision

As the Stage 4 restrictions take hold we are trying to ensure that we have enough staff at school to cover the students onsite whilst also trying to limit the amount of staff movement in line with the Premiers Stage 4 direction. As such we are looking to tighten our procedures for onsite attendance so that we can make effective judgements about what staff we need onsite on any particular day. This tightening will not have any impact on students' eligibility to attend school but will ensure that we have accurate and up to date information about which students will be attending. As such we need your help in ensuring that you stick to the required timelines in order to facilitate up to date and accurate information.

Please find below the new details in dot form to help you make sense of these requirements

- The Onsite Attendance Form must be completed every Thursday by 3pm
- If the Onsite Application Form is not completed on time we **may** struggle to provide onsite supervision for your child
- The Onsite Attendance Form must be sent to [Lilydale.ps@education.vic.gov.au](mailto:Lilydale.ps@education.vic.gov.au) not my personal email
- Your Permitted Worker Permit **does not** need to be sent in every week, if we already have a copy, unless something has changed

### Friday 14<sup>th</sup> August Curriculum Day Cancelled

This Friday, we were due to have a student free curriculum day focusing on creating a new scope and sequence document for reading. After due consideration we felt that our school had had enough Curriculum days and that we would cancel this day in order to focus on continuing the remote learning and onsite teaching. As such classes will take place as normal on Friday.

### Hard Copy Packs for Prep to Grade 2

Unfortunately due to Stage 4 restrictions we are not able to accept parents onto our site to collect any hard copy packs that the teachers are putting together. As such we will be endeavouring to post these packs to you as soon as possible. This is complicated by not having staff onsite all the time, and further complicated by the delivery time of Australia Post which is very slow due to the demand on the system! Just be assured that the packs will be posted as soon as possible and we hope you receive them in a timely manner. Grade 3-6 classes will continue to use google classroom to provide resources.

Thanks

Andrew



We have recently put up some more of the 100 words around the school and they look fantastic!



# Remote Learning Timetable

**Music Lesson Links**  
 Prep-2: <https://youtu.be/MLvTaJC2PLw>  
 3/4 : <https://youtu.be/gLKeeAUtQfE>  
 The 5/6 video is only on google classrooms



	Monday	Tuesday	Wednesday	Thursday	Friday
8.30- 8.45	Staff Morning Briefing	Staff Morning Briefing	Staff Morning Briefing	Staff Morning Briefing	Staff Morning Briefing
9.00 - 9.30					
9.30 - 10.00	Prep Literacy 9.45am - 10.45am	Prep Literacy 9.45am - 10.45am	Prep Literacy 9.45am - 10.45am	Prep Literacy 9.45am - 10.45am	Prep Literacy 9.45am - 10.45am
10.00 - 10.30					
10.30 - 11.00					
11.00 - 11.30	RECESS	RECESS	RECESS	RECESS	RECESS
11.30 - 12.00	Prep Welfare Checks and Assessment	Prep Welfare Checks and Assessment	Prep Welfare Checks and Assessment	Prep Welfare Checks and Assessment	Prep Welfare Checks and Assessment
12.00 - 12.30					
12.30 - 1.00					
1.00 - 1.30					
1.30 - 2.15	LUNCH	LUNCH- Virtual Lego Club	LUNCH	LUNCH	LUNCH
2.15 - 2.45					
2.45 - 3.15					
3.15 - 3.30					
3.45 - 4.15	Leadership Meeting 3.45 - 4.45	Staff Meeting 3.45 - 4.45	3/4 team meeting 3.45 - 4.45	P-2 Team Meeting	
4.15 - 4.45				5/6 Team Meeting	

**The school now has BEANIES, \$12 each. If you'd like to purchase, please call the office**



School Photo day is now **WEDNESDAY 14th October**. Full School Uniform is required and your BIG SMILES!!!

Previously sent home is your **INDIVIDUAL SchoolPix order form**. Please order your photos online, including any sibling photos.



**SchoolPix will NOT be accepting CASH**

**If your child is unwell**

If your child is unwell you must keep them home particularly if they are exhibiting the signs and symptoms of Covid 19 including, cough, difficulty breathing and fever



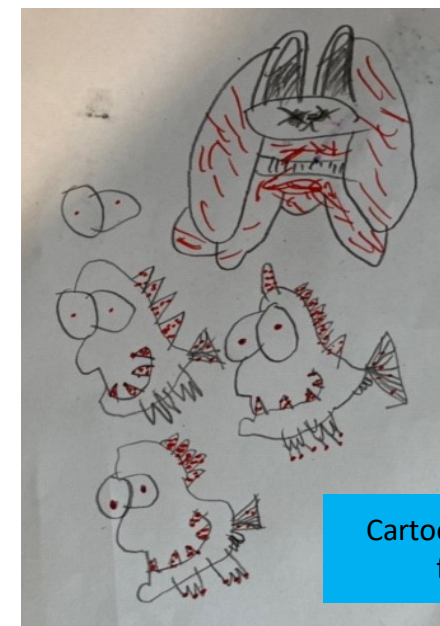
Rylan from Prep K has been busy learning how to make LEGO this week. He built his first LEGO train, truck and a forklift



One of our students doing a great job Remote Learning



I entered a Mask making competition over the weekend. Everything was close to hand ... even a rag to wipe the condensation off my glasses!!!! Stay Safe Michelle Mathews



Cartoon drawing by JD from 3/4EH

We had 11 children login for Chess Club last week. The Ladder is:

- Riley LC
- Nicholas W
- Jax
- Lislene
- Hamish
- Chase L
- Tom
- Jack C
- Bella
- Tamsin
- Zaroon
- Kirsty